



HOMES BY
CHARTFORD

The Difference is the Detail

THE MOORINGS

Woodlesford

ABERFORD ROAD, WOODLESFORD, LS26 8FY

CANAL SIDE LIVING AWARD WINNING HOMES



PREMIER EXCELLENCE
GUARANTEE AWARDS
QUALITY RECOGNITION AWARDS WINNER



Discover

THE MOORINGS

Our new collection of two, three and four bedroom homes at The Moorings are specially designed to bring you contemporary living in a delightful canal side setting, a perfect location to relax and watch the boats go by.

This idyllic development overlooking the Aire and Calder Navigation is just a stroll away from Woodlesford's many amenities, including shops, supermarket, pharmacy, post office, railway station and primary school. The park in the village enjoys a children's play area and a football pitch and nearby, Rothwell Country Park is a popular open green space with ponds and meadows to enjoy and it is home to a wide array of wildlife.

THE JUNIPER

3 BEDROOM SEMI DETACHED HOME

Plots 17, 18, 21, 22, 25, 26, 29, 30, 33, 34, 37, 38

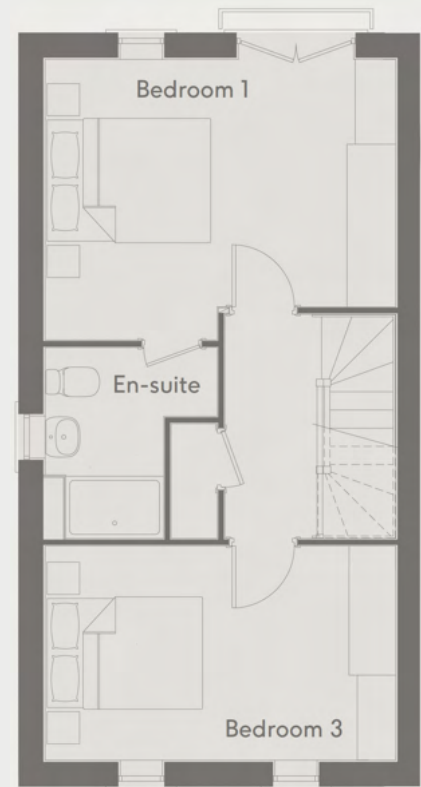
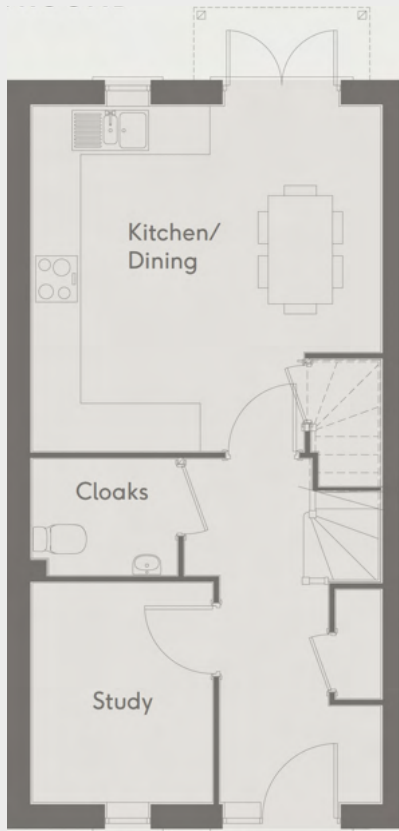


The Juniper house type is a welcoming home, full of style and functionality over three floors. This impressive three-bedroom home incorporates beautiful and modern living and the high specification fittings and build quality is designed for modern lifestyles and family wellbeing.

The entrance hallway leads onto the open plan kitchen and dining area that enjoys full height glazed doors that lead onto the outdoor patio and lawned garden beyond. Also, off the hallway is a study and a useful downstairs cloakroom.

To the first floor, there is an impressive lounge with glazed doors which lead onto a balcony. There is also a bedroom and a house bathroom. To the second floor, you will find the main bedroom that boasts a Juliette balcony and an ensuite shower room. A further bedroom completes the space.





THE MULBERRY

4 BEDROOM SEMI DETACHED HOME

Plots 16, 19, 20, 23, 24, 27, 28, 31, 32, 35, 36, 39



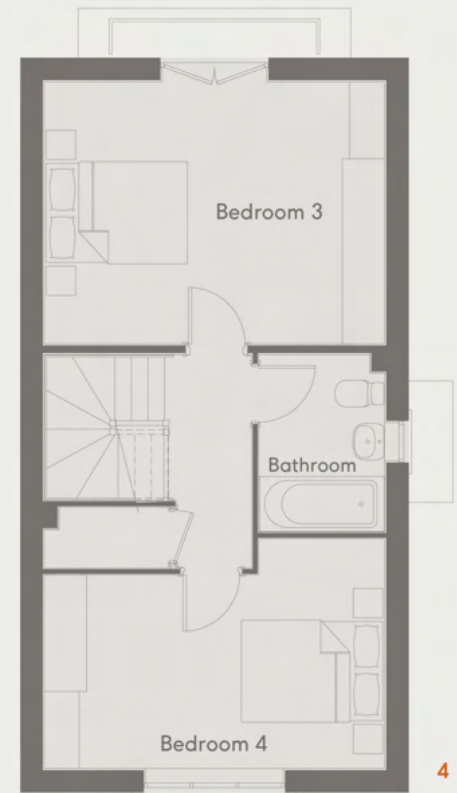
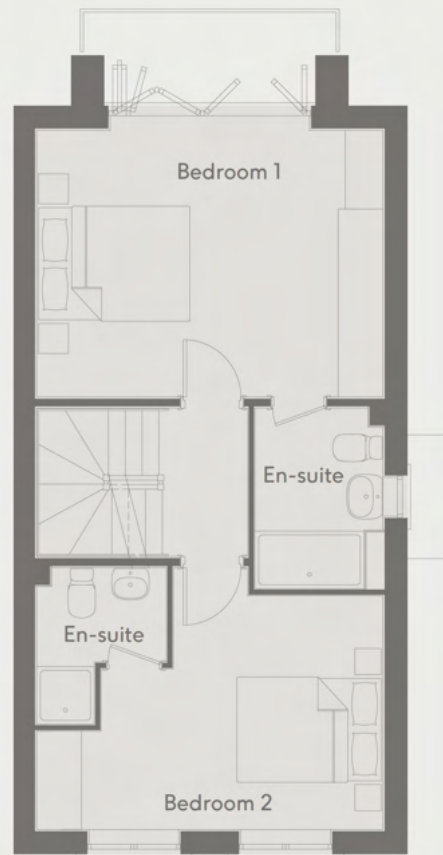
The design of The Mulberry house type incorporates both beautiful and functional features across three floors. This impressive four-bedroom family home is complete with high specification fittings and the attention to detail and build quality you expect from a Chartford home.

The central entrance hallway of this home leads onto the modern open plan kitchen and dining area, perfect for socialising. Also, off the hallway is a separate lounge with bi-folding doors that lead onto the outdoor patio and lawned garden beyond. A useful downstairs cloakroom completes the space.

To the first floor, you will find the impressive main bedroom that boasts an ensuite shower room and bifolding doors that lead onto a balcony. There is also a second bedroom with an ensuite shower room.

The upper floor benefits from two further bedrooms, one enjoys a Juliette balcony and a separate bathroom completes the space.





4

THE WILLOW

2 BEDROOM APARTMENT

Plots 10, 11, 12, 13, 14, 15, 40, 41, 42, 43, 44, 45



The Willow is an inviting two-bedroom apartment. This welcoming home shows how great design can make a space feel stylish. The high specification fittings and build quality is designed for modern lifestyles and wellbeing.

The entrance hallway leads onto the kitchen, dining area and lounge, giving an option of a connected social space but also a cosy retreat. Also, off the hallway is the main bedroom which benefits from an ensuite shower room, a second bedroom and the house bathroom completes the space.







HOMES BY

CHARTFORD

The Difference is the Detail

WWW.CHARTFORDHOMES.COM